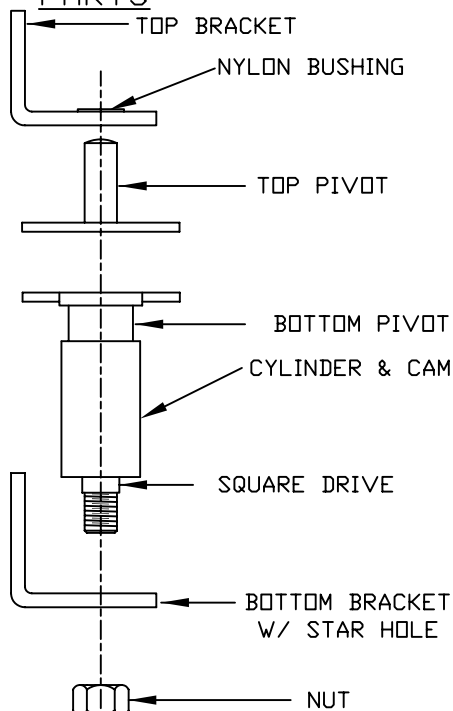
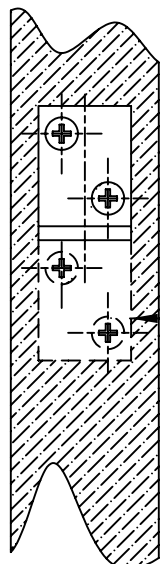


PARTS



STEP NO. 1

FASTEN BOTTOM
BRACKET TO JAMB

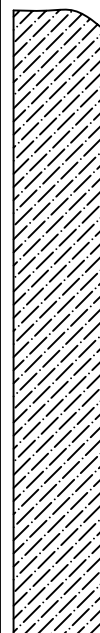


BOTTOM BRACKET
ONLY CAN ALSO BE
INSTALLED UP / DOWN
AS SHOWN

BE SURE BOTTOM BRACKET
IS IN VERTICAL ALIGNMENT
WITH TOP BRACKET

STEP NO. 2

FASTEN PIVOT CYLINDER
IN BOTTOM BRACKET

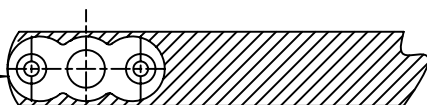


SET SQUARE DRIVE
INTO SQUARE HOLE
LOCATED IN THE
BOTTOM BRACKET

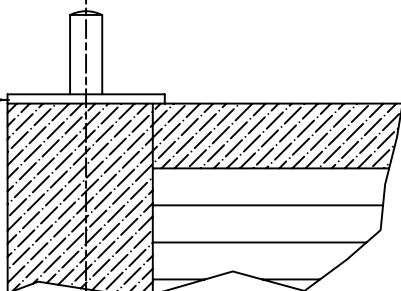
ONLY TIGHTEN NUT TO SNUG FIT
DO NOT OVER TIGHTEN NUT

STEP NO. 3

ROUND JAMB EDGE
OF DOOR WITH
7/8" RADIUS

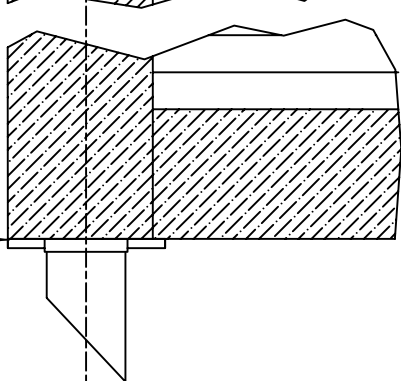


FASTEN TOP
PIVOT



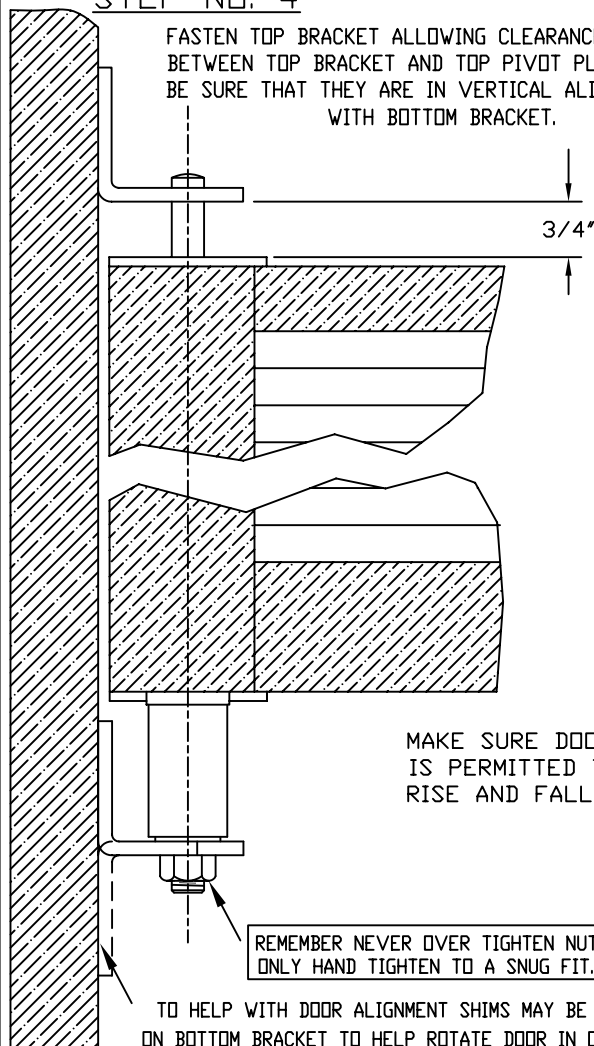
BE SURE TOP AND
BOTTOM PIVOT ARE
IN VERTICAL
ALIGNMENT

FASTEN UPPER CAM
OF BOTTOM PIVOT



STEP NO. 4

FASTEN TOP BRACKET ALLOWING CLEARANCE
BETWEEN TOP BRACKET AND TOP PIVOT PLATE.
BE SURE THAT THEY ARE IN VERTICAL ALIGNMENT
WITH BOTTOM BRACKET.



MAKE SURE DOOR
IS PERMITTED TO
RISE AND FALL

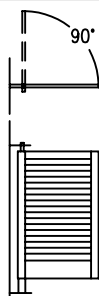
REMEMBER NEVER OVER TIGHTEN NUT
ONLY HAND TIGHTEN TO A SNUG FIT.

TO HELP WITH DOOR ALIGNMENT SHIMS MAY BE USED
ON BOTTOM BRACKET TO HELP ROTATE DOOR IN OR OUT.

-----NOTE-----

THE 7512-H WITH HOLD OPEN FEATURE
DOES NOT REQUIRE ANY SPECIAL INSTALLATION.
THE HOLD OPEN FEATURE IS ON THE CAM AND
HOLDS DOOR WHEN OPENED TO AT LEAST
90°. TO RELEASE DOOR, PUSH DOOR WITH AN
EASY PUSH. 7512 AND 7512-H ARE DOUBLE
ACTING AND ARE CAPABLE OF 180° PLUS
OPENING.

DOOR THICKNESS
7/8" TO 1 5/8"



BOMMER IND. INC. LANDRUM, S.C.

TYPE : LOUVER DOOR GRAVITY PIVOT
PART NO.: 7512 AND 7512-H

DOUBLE ACTING

Drawn by : JACKSON

DATE
14 MAR 2007

SCALE
N.T.S.

DRAWING NUMBER
865661

REV.
B